



Volume XXVIII Number 10 October 2016

Sailing Singles of South Florida

[HTTP://SAILINGSINGLES.ORG](http://SAILINGSINGLES.ORG)



**Up Coming
Events**

General Meeting

6 Oct

SSSF Board Meeting

24 Oct

Columbus Day Regatta

8—9 Oct

From the Helm By Lynette Beal, Commodore

Greetings SSSF members. I would like to thank all of you that attended the September General Meeting and we met our 20% quorum. The proposed revisions to the SSSF By-Laws passed with the exception of one. In addition, I was not able to get to two recommendations due to lack of time. At the October General Meeting I will present the By-Laws Committee recommendations to move Robert Rules of Order from the By-Laws to the Policies and Procedures and also ask that the Audit Committee be the appointed individuals to count Ballots for the Club's election of the SSSF Board of Directors each year when necessary.



The location of the SSSF General Meeting scheduled 10/6/16 at 7:00pm will be at Stingers 1201 S Ocean Blvd, Pompano Bch, Fl. 33062. Please come early for Happy Hour and good food!!

The Nominating Committee Dot Castell, Jim Price, and Janet Pogozeleski will be presenting the proposed slate of officers for the 2017 SSSF Board of Director's at the October General Meeting. Nominations can be made from the floor. If you require an Absentee Ballot please do so prior to 2 weeks before the election.

Let's have a big turnout for the October General meeting!

Sailing Singles of South Florida

Is the Mainsheet Obsolete?

One of the board members asked me this question. I had to reply that it appears that no one or very few members are reading the Mainsheet.

A few months ago, I published my intention to offer a motion at the board meeting to require liability insurance for SSSF Captains. Only one member responded in writing to me. I published his reply in the next Mainsheet. I did not receive any other comments in writing or in person at Flip Flops.

I have written a number of articles on my sailing experiences that relate to club interests. Again, no one has ever commented about my efforts. Do they even know who the editor is?

Now in 2016, our club has many channels to present information and photos to our members on almost instant time table. In light of these modern tools, do we need a monthly newsletter that presents the same information on a delayed basis?

At the next general meeting, I will ask for a show of hands of member who want the Mainsheet to continue.

Dick Linehan - Editor

Navigating at Night near Government Cut and the Miami Channel

Many years ago, I taught Russ Jones to sail on my J-30 "Freedom." He continued to learn and was a valuable deck hand when we raced "Freedom" in the Columbus Day Regatta. Mary Kay also sailed on "Freedom."



Continued on P 3

Sailing Singles of South Florida

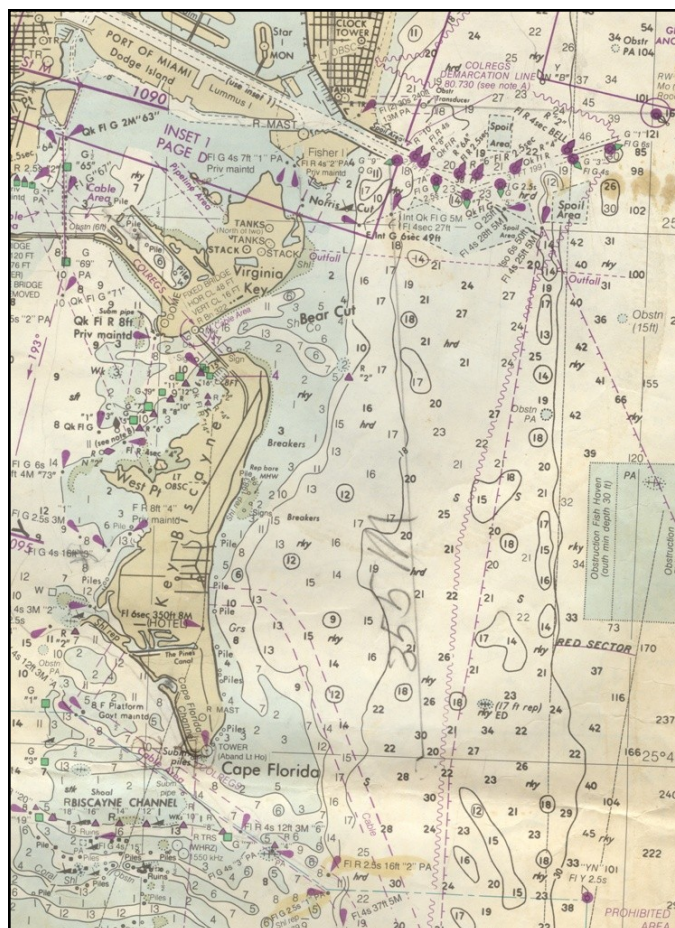


Years later, they bought a Beneteau 44 which they planned to sail to the Caribbean and to the Mediterranean. At their christening party, I gave them an offer to make a night sail lesson to prepare them for sailing non-stop on long passages. The plan was to leave their dock in Pompano Beach about 7 PM, motor down the ICW to Port Everglades, then sail out in the open ocean at night, sail south to Cape Florida on the southern tip of Key Bis-

When we left Port Everglades, the wind was out of the south south-west. I had Russ set a waypoint on his GPS map plotter to a point off of Hallandale Beach that would allow us to sail close hauled on one tack and then come about the other tack and to make a lay line for the channel entrance off of Cape Florida.

This lay line took us near the Miami Government Cut entrance. It was about 1 AM when I could see many white lights near the entrance. I could not see any green or red channel lights. I forgot that their boat had Radar included with the GPS map charting system. If this was on, I could have known how far each light was from us and if it was a vessel underway. These lights were the anchor lights or stern lights of fishing boats hove to.

The Maim Government Cut Channel has about a 30 degree bend in it. So there are four range marks in the water off of the channel so mariners can line up with the channel and make the turn to stay in the channel as it bends. Consequently, there are a number of pilings, dolphins and lights in this area. To navigate this area at night requires special attention to charts or the mapping GPS and a sharp lookout.



Miami Marlins ace pitcher Jose Fernandez had been fighting with his pregnant girlfriend the night he jumped onto a boat and was killed along with two friends. He had been in a bar drinking and then late at night decided to take his 32 ft. center console high-power sports fishing boat out into the Atlantic.

Continued on P 4

Sailing Singles of South Florida

With the salary that he was making, the boat should have been equipped with all the latest electronic navigation equipment including a GPS Map plotter Radar with a Sonar display.

About 3:30 AM, he ploughed his boat directly on to the stone jetty at the Government Cut entrance at about 60 MPH. Can you imagine driving your car into a brick wall at 60 MPH? Nearby the jetty, is a red buoy with a 4 second flashing red light. As I described above, this channel entrance is tricky, filled with drifting fishing boats, and has many obstacles so the prudent mariner should enter this area at a safe speed.



There is a lesson here for all the sailors in our club. There have been many accidents caused by reckless operation of power boats at night in the Government Cut area and Biscayne Bay. In one case, fishermen were operating a small power boat without running lights and were run over by a high speed go fast boat at night. When anchoring, I try to anchor near a shore, in a cove, or near a large shoal for protection from reckless power boats. — Dick Linehan

Sailing Singles of South Florida

October General Meeting

October 6, 2016

7 PM

Stingers

1201 S Ocean Blvd, Pompano Bch, Fl. 33062

Please come early for Happy Hour and good food!!

Sailing Singles of South Florida

October Birthdays

Becky Austin	10/26
Burton Cohen	10/11
Harry De Baby	10/8
Richard Harper	10/13
Jane Haughian	10/10
Andrea Keyser	10/29
Mary Kress	10/1
Russ Maclin	10/24
Karen Madison	10/7
Gary Mayes	10/20



New Members

Joseph Basil

Jennifer Beckman

James Bouskela

Dan Cook

Harry De Baby

Paul Ferguson

Sandra Fernandez

Gabe Forray

Howard Grossman

Amy Gugick

Carol Horning

Steve Kivett

Cheryl Lutz

Russ Maclin

Wendy McCarthy

Sofia Mercer

Stefani Mueller-Punga

Tina Owens

Chong Piper

Marcus Robertson

Sandi Saunders

Sharon Schultz

Sandra Stafford

Prince Taylor

John Henry Falk

Sailing Singles of South Florida

2016 Board of Directors

Commodore	Lynette Beal	commodoresssf@sailingsingles.org
Vice Commodore	Anne Ekstrom	vicecommodoresssf@sailingsingles.org
Secretary	Gillian O'Neill	secretarysssf@sailingsingles.org
Treasurer	Jane Haughian	treasurersssf@sailingsingles.org
Social Director	Debi Hallmark	socialdirsssf@sailingsingles.org
Membership Director	Susan Cohoat	membershipdirsssf@sailingsingles.org
Sailing Director	Stan DeKiel	sailingdirsssf@sailingsingles.org
Fleet Captain	Kelly Dobbs	boatownersrepsssf@sailingsingles.org
Mainsheet Editor	Dick Linehan	newsletterdirsssf@sailingsingles.org
Internet/Media Producer	Max Goldstein	webmastersssf@sailingsingles.org

Room for rent!!

In a shared home in the beautiful Coral Ridge Estates!
4 bedroom, 3 bath//\$700 Monthly, all amenities included
pool, close to the Beach!
Call [954-565-0086](tel:954-565-0086)/ Karen

SUMMERFIELD BOAT WORKS, INC. *Complete Marine Repairs*

1500 S.W. 17th St. Ft. Lauderdale, FL 33312
PHONE 954-525-4726 E-mail: frank@summerfieldboat.com
FAX 954-525-8613 Website: www.summerfieldboat.com

FRANK GIAMBATTISTA



SINCE 1940

Assistant Manager

Mainsheet Deadline

The deadline for the November issue is 28 October