



Volume XXVIII

Number 12 December 2016

Sailing Singles of South Florida

[HTTP://SAILINGSINGLES.ORG](http://sailingsingles.org)



**Up Coming
Events**

General Meeting

5 Jan 2017

SSSF Board Meeting

18 Dec

Peppermint Ball

2 Dec

From the Helm By Lynette Beal, Commodore

Greetings SSSF members. This will be my last From the Helm. I want to thank you for allowing me to be your 2016 Commodore. It has been a true honor and a joy to work with you and support SSSF! I want to thank the 2016 Board of Directors for all their dedication and hard work. In reflection, we had a great year that went by so fast. Think about it. We started the year with a Rockin New Year's Eve Party at Rudy & Arlene Sprenger's home. How many of you kept your Resolutions? In addition, we celebrated the Chinese New Year with a great raft-up! That brought good luck to our club. Thank you to Stan Dekiel.



SSSF Captain's Kelly Dobbs, Jim McBrayer, and Tom Mestrits and crew participated in the historic first race to Cuba last fall. What a monumental event. Everyone enjoyed their presentations at the General meetings. Overnight Sails to the Circle Raft-up with HISC Sailing Club, Sunfest, Pumpkin Key, the Abaco's, and of course Peanut Island. What a fantastic time we have had all year. Captain Kelly and Sheila O'Neil you rock. Keep up with sailing and I know next year will be as fun as this year. Thanks to all our captains!

Then we had a Cheeseburger in Paradise Party at Stan Dekiel's and Debi Hallmark's Club House. That was a big success. How many of you went to the free picnic to Hugh Taylor Birch State Park? Everyone enjoyed the Tram Rides and water activities? In addition, SSSF sponsored a great Halloween Party at the Sprenger's home again! A big thank you to Debi Hallmark!!

SSSF was featured on the first page of the Waterfront Times. How cool was that! Our membership increased from approximately 80 to 133 members today. Awesome work Susan Co-hoat and Ben Nahabedian. Keep up the good work!! A shout out to Karen Foster and Captain Jim McBrayer for excellent cooperation with the media.

Continued on page 2

Sailing Singles of South Florida

Sailing Education has been a priority. We had excellent sailing videos, speakers and one or two five minute commercials at monthly General meetings. We also had two awesome SOS's with free barbecue's. In addition, our newsletter had many interesting and educational articles. Anne Ekstrom and Dick Linehan are to be commended.

The SSSF By-Laws were updated effective 10/13/16 thanks to all your support. Grievance Procedures and Roberts Rules of Order are being moved to Policies and Procedures. A big Thank you to Debi Hallmark who chaired this committee, Lynette Beal, Anne Ekstrom, Gillian O'Neill, Dick Linehan, Nikki McSweeney, and Max Goldstein. Max Goldstein did a great job updating Wild Apricot and our new Website. Jane Haughian was an excellent Treasurer too.

SSSF celebrated Thanksgiving at Dot Castell's home. Who better to give thanks with then our SSSF friends! We love you Dot. Look forward to the Peppermint Ball, Boat Parade, and a great Change of Command. I would like to wish the SSSF 2017 Board of Directors a successful year!

Mainsheet History by Dick Linehan

**Special acknowledgment to Andrea Marlow, Max Goldstein, Ethel Facundo,
Nikki McSweeney and Jean Crocker-Deering.**

In 1959, I flew from California to Japan in 36 hours on a DC-6 propeller airliner. This did not include time on the ground refueling. In 1987, I flew from California to Hawaii in one and half hours aboard a Concorde at twice the speed of sound and at 62,500 ft. Technology improves with time.

In 1965, I studied Fortran 2 and tested my code on an IBM 1620 business computer. It had no operating system. I had to load in a deck of cards to run a specific application program to check my program deck of cards. In 1968, while in college, I had a part time job with IBM installing engineering changes to IBM 360s main frame business computers. These computers were the first machines to have an operating system. I worked on an IBM 360 Model 30 that had 16 kilobytes of memory. In 1976, I had an Apple 2 personal computer that had 64 kb of memory. Today, I have an HP laptop with 8 GB of memory. Technology improves with time at an ever increasing rate!

In this spirit, I am writing a brief history of the changes in format and production techniques that were used to present our members with the current club news. My research was only able to get information back to 1998.

Originally, the Mainsheet was typed and pasted on sheets that were reproduced on a copy machine. Later, copy was submitted camera ready to a printer. Then later, the printer did the formatting. In 2010, SSSF had a Yahoo Newsgroup. About 2011, the printed publication was stopped and it was made available on-line one we had a web site. In 2017, there will be a dramatically new format for dispensing our club news.

Sailing Singles of South Florida

Mainsheet Editors — 1998 to 2017

1998 – Pete Raby

1999 – Sue Mattson

2000 – Edward Parmele

2001 – Joe Dinan

2002 – Max Goldstein

2003 – Max Goldstein & Joe Dinan

2004 – Melanie Camp

2005 – Max Goldstein

2006 – Max Goldstein

2007 – Peter Stephenson

2008 – Peter Stephenson/

Max Goldstein finished

2009 – Max Goldstein

2010 – Max Goldstein

2011 – Rich Hustins

2012 – Rich Hustins

2013 – Max Goldstein

2014 – Karen Foster

2015 – Karen Foster/

Dick Linehan finished

2016 – Dick Linehan

2017 – Gillian O'Neil

Mainsheet History continued

Currently, on the SSSF web site, under NEWS, you can download Mainsheets back to January 2013. The following pages are examples of early Mainsheets. Notice that most have a newspaper style 2 column formats. Newspapers have many columns to present as much news as possible on the front page to entice the reader. Once the publication was on-line, it did not make sense to have the reader page forward and then back to read two different articles. At this point the Mainsheet was in the format of a conventional newsletter.

Producing a newspaper or newsletter requires that all the stories, photos and graphics fit into equal size pages. Rules of formatting apply – text must be justified both right and left, photos have borders and must be sized and cropped to fit the page. Once the publication is ready by the deadline, it is published only once a month. I have held up the publication once to get In the Halloween Party photos. The proposed new blog format will not have any of these restrictions.

Now, on the following pages are the masthead and front page news from a few Mainsheets.

The Main Sheet

Newsletter of the Sailing Singles of South Florida

Volume 10, Issue 1

January 1998

9 $\frac{1}{2}$ Days, Continued from December issue

Aboard s/v Little Trivia, Hunter Legend 43 Operated by WOMENSHIP, a Sailing School for Women.

By Paul Bousquet

"... Sid was unable to head into the wind. Like a real captain, I started to yell at him. But he, oh so politely, yelled back that the boat would not respond to the helm. "He, he, he!" He was in neutral! My fault. I had not told him how to engage the transmission."

DAY 6. (We were now into our 6th day, early morning). From the foredeck, I went back to the cockpit, dragging my tether from the harness and engaged the transmission into forward. Amazingly, we now had response from the helm. The main sail was back winded and the preventer secured so we first had to head downwind and fill the sail in order to take pressure off the preventer, release it then head upwind and bring the main down. By now, the wind was blowing 20 + kts and we had some very good size waves. The wind velocity feels very different depending on your direction so when we had our nose into it the wind felt a lot stronger. After a bit of a struggle and a few bruises from just holding on, the main sail was down and secured. During all this maneuver, it was imperative to keep track of our position as we were not very far from the reef.

By now, we are heading south, bare pole and under power. Sid is trying to keep a straight course but the large following waves are making it difficult. In silence, and very disappointed, I am contemplating as to what decision to make: go back to Miami or keep going. Turning back meant that the trip would last a few days longer, and that I would be away from work more than I really wanted to, but it would allow for proper repairs to be done including running and steaming lights. The decision was easy to make: we were only a few hours away from Miami so back we headed. The ride would be very rough with NE winds blowing at 20+ kts and 6 to 8 foot seas. Our progress was slow but steady and the boat pounded hard, with a few instances when I thought the hull would split in two. The spray reached the cockpit and got us all drenched.

As we reached the Miami channel, we were now heading west and the waves were hitting us on the beam so I altered our course to

Continued on page 3



Christmas Party and Boat Parade great success!!!!

December is always a special month for social activities. Our Christmas Party was well attended and enjoyed by all.

Despite a few rain drops here and there the boat parade was a great deal of fun.



CORRECTION ◇ Eulogy for Winnie Gotschling was written by **DEBBIE FIGUEIRA**

CHANGE OF COMMAND DINNER JANUARY 24TH

The Main Sheet

Newsletter of the Sailing Singles of South Florida

Volume 11, Issue 6

JUNE 1999

SSSF BIDS FAREWELL TO MARINA BAY



Sandy, our faithful bartender, and members of SSSF enjoyed a "Last Supper" in commemoration of the good times we've all shared during the last couple of years at Marina Bay. Part of the "singles" reality is that some relationships end and new ones are always beginning. And so...together we venture (or adventure) on to a new meeting place for Happy Hours (Murphy's Law) and General Meetings (Bahia Cabana). See inside on page 2 for times and locations.

Bimini weekend aboard Stone Raven

By Joe Dinan

Stone Raven is a beautiful 41' CT ketch, made in Taiwan about 25 years ago with lots of teak on the decks, the cockpit and throughout the cabins below. Capt. **Errol Hemingson** and the crew, **Joe Dinan**, **Diane Gentzler**, **Janice Nelson** and **Charlie Smithline** planned to leave the dock at 3:00 sharp on Friday afternoon to get through the downtown bridges before they shut down at rush hour. However, the mechanic who was repairing the davits forgot the traveler at the shop, so we had to wait another few hours. We arrived at the 15th St. fuel dock at about 7 p.m., in time for a fill-up. However, the fuel caps were on too tight and we didn't have the deck-key to open them.

We took the 7:30 bridge without the fuel. The wind was from the E-SE so our captain decided to head out at 155 oward Bimini, rather than head South to Miami. This did

turn out to get us there more quickly, motoring all the way. The advantage of going to Miami seems to be that you get to sail part of the way. Around midnight, a cold squall passed over and made it uncomfortable for the poor souls in the cockpit, including the captain's two dogs, Sarah and Skipper. The fuse for the autopilot burned out, so we steered by hand for a few hours before replacing it and going back to the easy way. Finally around dawn, we spotted our destination, and were able to sail with the jib, down to the range markers on the beach.

We went into Alicetown Harbor, anchored and had a Delicious breakfast. The dogs got a dinghy ride to shore For relief and the captain cleared us through Customs & Immigration. The crew stayed aboard and enjoyed a

Cont'd on page 4



THE MAIN SHEET

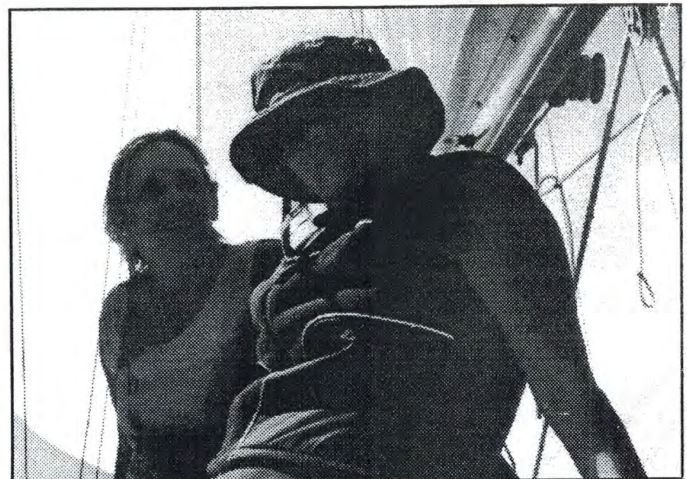
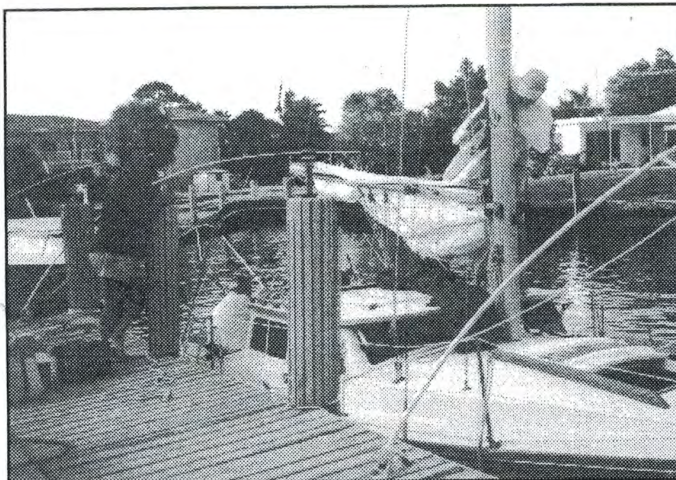
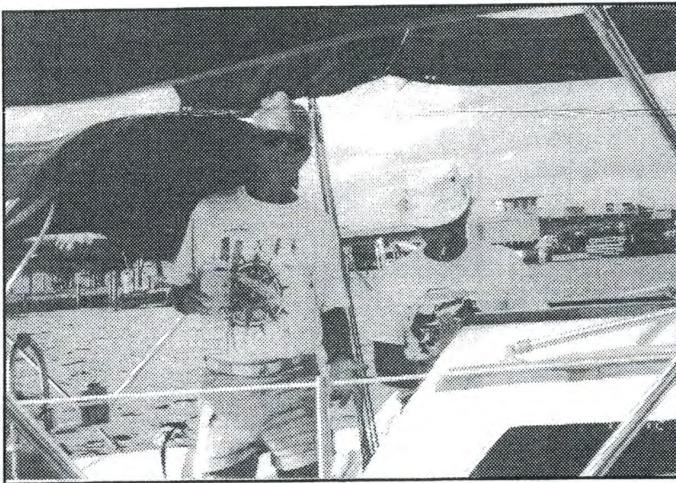
NEWSLETTER OF SAILING SINGLES OF SOUTH FLORIDA

Volume XIV

December 2000

LATE NOVEMBER DAY SAIL & RAFT-UP

These pictures are on our web site. Drop a note to your northern Friends and tell them to look us up.





THE MAIN SHEET

NEWSLETTER OF SAILING SINGLES OF SOUTH FLORIDA

Volume XIII No.2

February, 2001



Commodore Paula Nee and her 2001 Board Members

Change of Command

The SSSF Change of Command Dinner Dance has always been the highpoint of the social calendar and this year's was no exception. The semiformal event was held at the elegant Lighthouse Point Yacht and Racquet Club. Over eighty people enjoyed cocktails and delicious hors d'oeuvres followed by their choice of succulent prime rib of beef, fish or chicken. Entertainment for dancing was provided by the band Opus One.

Arlene Bothwell again made ten beautiful centerpieces for the tables as she did last year. They were given as prizes to the lucky person sitting closest to the salt shaker on each table.

Past commodore Ed Parmele thanked his outgoing board, Joe Silverman, Libby Downing, Linda Levesque, Dan Sisley and

Jim Phillips before turning the gavel over to our new commodore, Paula Nee. The retiring board members were given specially embroidered shirts as tokens of appreciation for their service. Paula introduced her new board, Andy Deering, vice commodore, Andrea Myers, secretary, Bob Smith, treasurer, Joe Dinan, newsletter, Angela Glad, social, Dan Sisley, sailing and Margie Bornstein, boat owners' rep. Joe Cook is the new membership director, but he was unable to attend.

This year's board is optimistic about having an excellent year with the help of lots of past experience. Paula was one of the founders of the club and is a past social director. Andy has served in past years as sailing director, vice commodore and commodore. Joe previously served as newsletter, vice commodore and commodore. Dan served on last year's board as sailing director. The other board members bring enthusiasm and a wealth of outside experience to their tasks.



Commodore Nee and Captain Kozak at the Holiday Party



THE MAIN SHEET



NEWSLETTER OF SAILING SINGLES OF SOUTH FLORIDA

Volume XVI, No. 2

February, 2004

Change of Command

- Max Goldstein

The 2003/2004 Change of Command was held, as usual, at the Lighthouse Point Yacht and Racquet Club on Saturday, January 24th and, as usual, was a wonderful success. A total of 91 people attended and feasted on hors doeuvres of Swedish meatballs, spinach-stuffed mushrooms, coconut chicken tenders, and baked raspberry brie puffs and then moved inside for the main course of roast prime rib of beef au jus **or** stuffed chicken breast with spinach and boursin **or** pecan-crusted snapper (and yes, I am copying this off the flyer).

People danced to music by Winston Duggin before and after the awards ceremony, and all-in-all it was a wonderful evening. Thanks to the staff at the Lighthouse Point Yacht Club, especially Gina Dubé (who graciously took my updated attendance and food orders up until the Thursday before, even though we agreed that the deadline was the previous Monday at midnight). Thanks to Nancy Widener, who helped me sell tickets, and to the following:

Organizers:

- Debi Hallmark
- Jean Crocker
- Max Goldstein
- Denise Lush

Budgeting, trophies, awards and ideas, lists of recipients and tracking down pennants:

- Linda Johnson
- Shirley Kaplan
- Carol Saler
- Ivan Janowsky
- Diane Gentzler
- Karen Manzo

Decorations:

- Arlene Bothwell
- Denise Lush
- Lynn Robbins
- Ivan Janowsky
- Maureen Fuller
- Rudy Sprenger

The Change of Command list of awards starts on page 4. More pictures are on page 8 and 11.



Main Sheet

Sailing Singles of South Florida



Volume: XXIII

Number 1

January, 2011

2011 Change of Command

First, happy new year to all. Sailing Singles celebrated their annual Change of Command at the Lighthouse Point Yacht and Racquet club (in the larger back room this time!). Attendance was to capacity (over 119 if you count the band) so it shows that this is one of our most popular events, in addition to being our fanciest.

There is a huge amount of preparation involved to make sure everything goes right: planning the menu, creating the centerpieces, creating and mailing the invitations, collecting the responses and coordinating with the LPY&RC, buying the gifts, getting the trophies engraved, hiring the band, buying the flowers for the board members, and a LOT more. So, a **BIG** thanks to the following members for all their hard work.

Arlene Boswell	Max Goldstein
Ethel Facundo	Dot Castell
Terry Patterson	Carol Rappaport
Nancy Widener	Rena Mamalou
Morris Zand	Rich Hustins
Marie Alcazar	and everyone else who helped.



Sailing Singles of South Florida

December Birthdays

Sandra Fernandez	12/31
Holly Griffen	12/16
John Hansbrough	12/1
Robert Horin	12/24
Cynthia Lynne	12/22
William McLean	12/7
Nikki McSweeney	12/22
Thomas Mestrits	12/18
Douglas Nobel	12/11
Janet Popozeiski	12/6



January General Meeting

January 5, 2017

7 PM

Stingers Pizza

1201 S Ocean Blvd, Pompano Bch, Fl. 33062

Please come early for Happy Hour and good food!!

Sailing Singles of South Florida

2016 Board of Directors

Commodore	Lynette Beal	commodoresssf@sailingsingles.org
Vice Commodore	Anne Ekstrom	vicecommodoresssf@sailingsingles.org
Secretary	Gillian O'Neill	secretarysssf@sailingsingles.org
Treasurer	Jane Haughian	treasurerssf@sailingsingles.org
Social Director	Debi Hallmark	socialdirssf@sailingsingles.org
Membership Director	Susan Cohoat	membershipdirssf@sailingsingles.org
Sailing Director	Stan DeKiel	sailingdirssf@sailingsingles.org
Fleet Captain	Kelly Dobbs	boatownersrepssf@sailingsingles.org
Mainsheet Editor	Dick Linehan	newsletterdirssf@sailingsingles.org
Internet/Media Producer	Max Goldstein	webmasterssf@sailingsingles.org

SUMMERFIELD BOAT WORKS, INC.

Complete Marine Repairs

1500 S.W. 17th St. Ft. Lauderdale, FL 33312

PHONE 954-525-4726

E-mail: frank@summerfieldboat.com

FAX 954-525-8613

Website: www.summerfieldboat.com

FRANK GIAMBATTISTA



Assistant Manager

SINCE 1940